

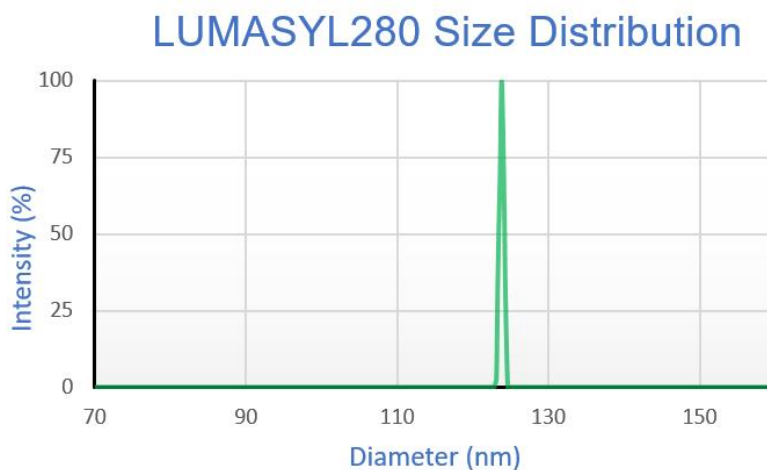
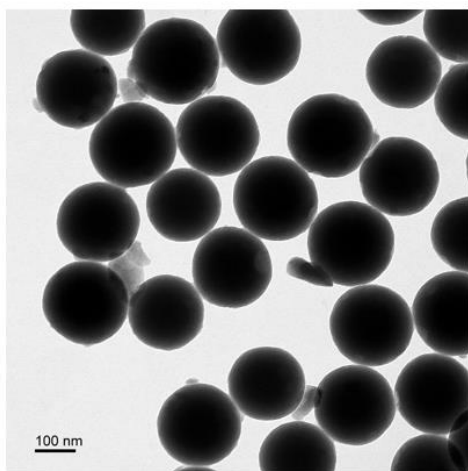


SUPERIOR SILICA

# LUMASYL280™

## Particle Characteristics

Effective Diameter (nm)	122.6 nm
Polydispersity Index	0.011
Coefficient of Variation (%)	4 %
Concentration (counts per second)	225 kcps
Surface functionalization	Octyltriethoxysilane
pH in solution	5.5
Surface Characteristics	Hydrophobic ( c.a. >120°)



Dry quantities available up to 10,000 kg.  
Target application: additive and/or filler in toner compositions.

All size characteristics are measured using Brookhaven 90Plus Particle Size Analyzer. Surface functionalization has been carried out using reagent grade octyltriethoxysilane. LUMASYL280™ is manufactured using Superior Silica's proprietary sol-gel process followed by surface modification post-synthesis.