

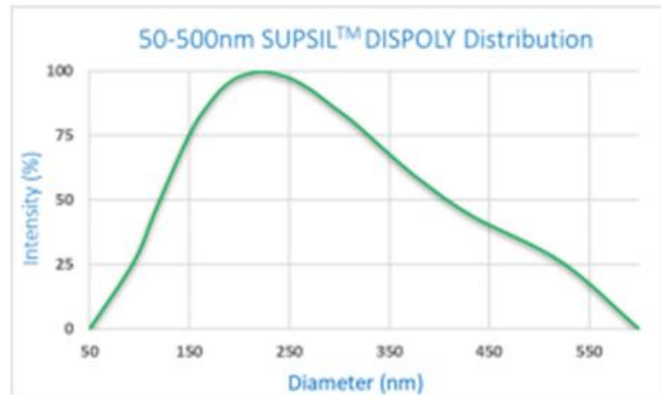
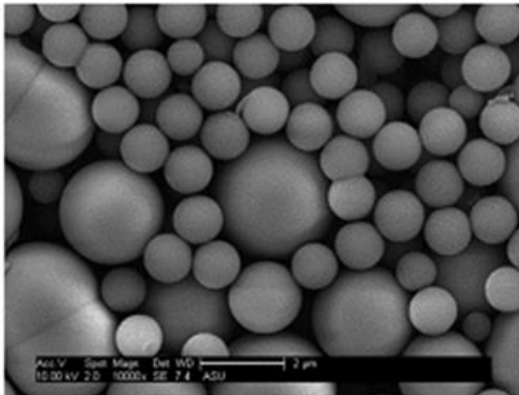


SUPERIOR SILICA

Polydisperse 50-500nm Silica (SiO₂) Particles

PARTICLE CHARACTERISTICS

Product Line	SUPSIL™ DISPOLY
Effective Diameter (nm)	250 ± 200nm
Polydispersity Index	~0.180
Coefficient of Variation (%)	~33 %
Concentration (counts per second)	325 kcps
Surface functionalization	Silanol (Si-OH)
pH in solution	8.4



Solutions available in water or ethanol at a custom wt%.

Dry quantities available up to 1000 kg.

All size characteristics are measured using Brookhaven 90Plus Particle Size Analyzer. The diameter above represents the hydrodynamic diameter in solution i.e. “effective diameter”.

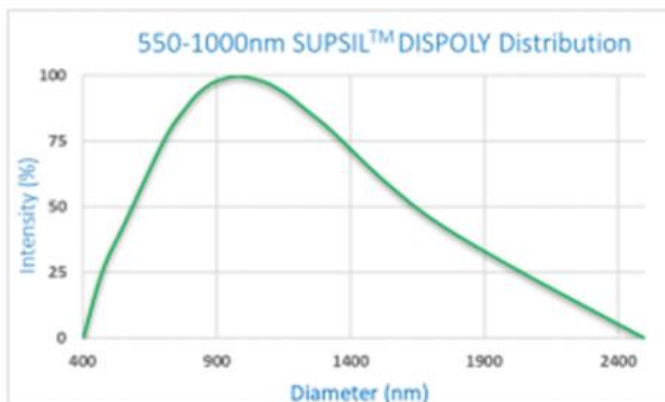
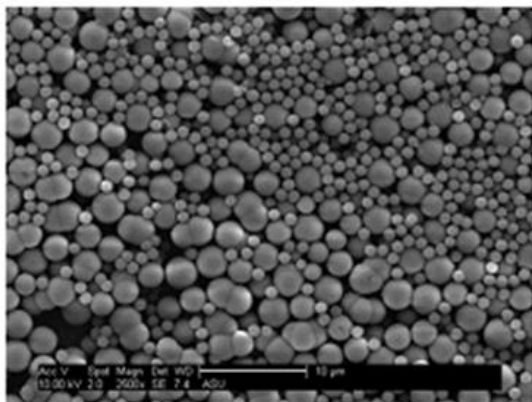


SUPERIOR SILICA

Polydisperse 550-1000nm Silica (SiO₂) Particles

PARTICLE CHARACTERISTICS

Product Line	SUPSIL™ DISPOLY
Effective Diameter (nm)	750 ± 250nm
Polydispersity Index	0.215
Coefficient of Variation (%)	~33 %
Concentration (counts per second)	325 kcps
Surface functionalization	Silanol (Si-OH)
pH in solution	8.4



Solutions available in water or ethanol at a custom wt%.

Dry quantities available up to 1000 kg.

All size characteristics are measured using Brookhaven 90Plus Particle Size Analyzer. The diameter above represents the hydrodynamic diameter in solution i.e. “effective diameter”.

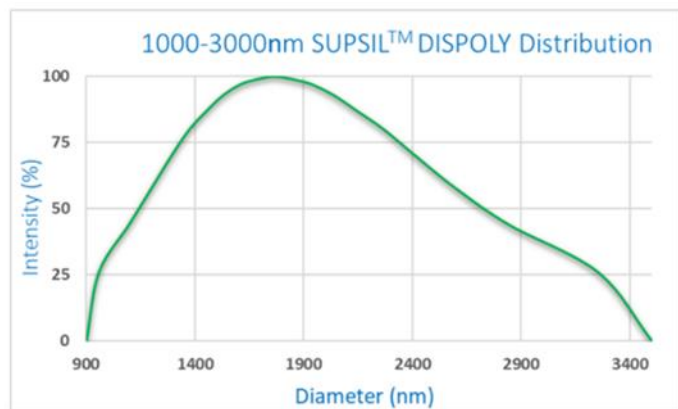
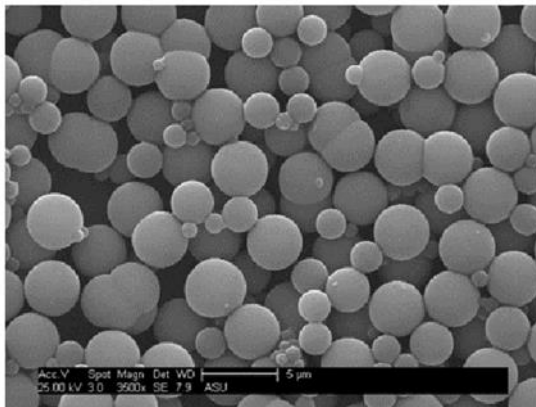


SUPERIOR SILICA

Polydisperse 1000-3000nm Silica (SiO₂) Particles

PARTICLE CHARACTERISTICS

Product Line	SUPSIL™ DISPOLY
Effective Diameter (nm)	2000 ± 1000nm
Polydispersity Index	0.148
Coefficient of Variation (%)	~40 %
Concentration (counts per second)	325 kcps
Surface functionalization	Silanol (Si-OH)
pH in solution	8.4



Solutions available in water or ethanol at a custom wt%.

Dry quantities available up to 1000 kg.

All size characteristics are measured using Brookhaven 90Plus Particle Size Analyzer. The diameter above represents the hydrodynamic diameter in solution i.e. “effective diameter”.